

SUPER BOWL & NFL BRIEFCASES/PORTFOLIOS



We recently acquired four very rare NFL media totes. Three of which are Super Bowl-logoed computer portfolio briefs each with two large zippered compartments, utility pockets and detachable shoulder straps. The Packer Hall of Fame Golf Classic tote is a club Duffel bag. All are new and unused, a very rare, great collectable that was issued to the media only.

Super Bowl XXXIII (Broncos34-Falcons 19 @ Miami)

15" X 12" X 4" Navy synthetic leather, embroidered full color logo on side, ID tag and metal zipper pulls. Also has the Super Bowl logo on it. **\$259.95**

Super Bowl XXXIV (Rams 23-Titans 16 @ Atlanta)

15" X 12" X 6" Dark green 600 Denier nylon saddlebag style with leather tone handles and dual straps. There is a 6" NFL football-panel replica insert on the flap along with logoed metal zipper pulls and an ID tag. **\$249.95**

Super Bowl XXXVII (Buccaneers 48-Raiders 21 @ San Diego)

18" X 12" X 6" Fully padded navy 600 Denier nylon. 4 1/2" colorfully embossed logo with one extra large zippered side compartment for a laptop computer. Logoed metal pulls and an ID tag complete this ensemble. **\$239.95**

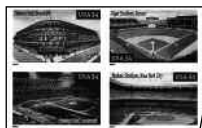
Packer Hall of Fame Golf Classic

12" X 18" Barrell shaped 600 Denier dark green club duffel with a 5 1/4" embroidered circular logo text with a Packer Helmet inside the text. Single entry top zip main compartment with end mesh pockets along with a zippered side pocket and 2 black nylon "C" handles. **\$249.95**



BASEBALL & FOOTBALL U.S. COMMEMORATIVE STAMP SHEETS

We can now offer three different US Commemorative stamp sheets. Each sheet contains 20 self sticking stamps. The Baseball Sluggers stamps dated 2005 feature Roy Campanella, Hank Greenberg, Mel Ott and Mickey Mantle. The stamps are in a similar design to the 1951 Bowman baseball series on the front and have a brief bio of each player's career on the back of the sheet. We have these available in a full sheet (6" X 7 3/4") of 20 stamps. The Baseball's Legendary Playing Fields stamp sheet is comprised of 10 different stadiums including Ebbets Field, Tiger Stadium, Crosley Field, Polo Grounds, Fenway Park, Wrigley Field and Yankee Stadium with a brief history of each park on the back of the sheet. Each sheet also has a photo of Sportsman's Park in St. Louis on the top but it is not a stamp. This 20 stamp sheet measures (7 1/4" X 6 1/2") and is dated 2000. Dated 2002 the Early Football Heroes stamps feature Bronko Nagurski, Ernie Nevers, Walter Camp and Red Grange. Each stamp has a classic full color photo of the player. The football heroes 20 stamp sheet measures (7 1/8" X 7 1/4"). These are all a very limited release so order yours today. All Near Mint- Mint.



Baseball's Sluggers Sheet (20 stamps) \$15.00

Baseball's Legendary Playing Fields Sheet (20 stamps) . . \$25.00

Early Football Heroes Sheet (20 stamps) \$20.00



(Front Cover)



(Back Cover)

1888 A36 Goodwin "Champions" Tobacco Premium Album

Goodwin's N162 Champions tobacco series features the most colorful view imaginable of 19th Century athletes. The set is distinguished from its multi-themed contemporaries by its blazing hues, crisp visual presentation, and incomparable subject selection. Not only is the set populated by baseball's highest-profile players, and superstar-caliber boxers, wrestlers, weightlifters, and pedestrians, it has even included chess masters and **Buffalo Bill Cody**, as well as one of the earliest college football cards (featuring **Beecher** of Yale). The set's designs have been faithfully transferred to the pages of this showpiece premium. Cigarette ads on the bottom edge of each Champions card, have been eliminated in the album's versions. The 6" x 7-3/4" book is a treat to view. Page layout is marvelously accomplished, with each leaf reflecting its own style of artistry. Of particular interest are the pages featuring the set's eight baseball figures. **Brouthers, Anson, Andrews** and **Caruthers** are arranged on the first of the volume's 10 inside pages, and **Kelly, Keefe, Dunlap** (Pittsburgh) and **Glasscock** grace its back cover. The album displays extremely high grade (EX+ overall), with light wear at the corners with the inner pages being at least EX/MT to NM quality. Its original linen binding remains securely glued at the spine. Own a piece of the 19th century with this extremely scarce piece of history.

\$7999.95

Like Auction Style Buying???

Check out our auction listings on Ebay!

Catalog items, graded cards, unusual items and much more – our listings are ever growing.

You can find us on Ebay as: **fritschcardsauctions**