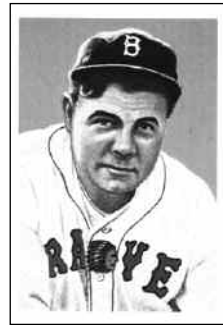


## REGGIE JACKSON SETS

1984 Reggie Jackson card set of 30. This set shows "Mister October's" career from his first days with the A's to rare shots of Reggie in an Oriole uniform, as a Yankee, and finally photos of him with the Angels. There are some great color photos of Reggie along with a series of 8 cards showing his complete swing. The backs feature stats and information about his illustrious career along with a montage of his uniform showing different years of his baseball cards. This set was issued in 2 different card sizes similar to the 1975 Topps and "75 Topps Mini sets.

**Complete Set 2 1/2" X 3 1/2" (30 Cards) \$15.95**  
**Complete Set 2 1/4" X 3 1/8" (30 Cards) \$24.95**

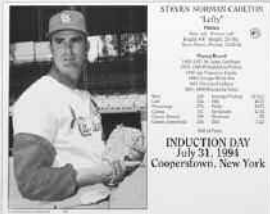


## 1985 THE ULTIMATE BASEBALL CARD SET

by Decathlon Corporation

This set, featuring 15 cards, was illustrated by the same artist who painted the 1953 Topps cards. These attractive full-color drawings measure 4" x 5-5/8" and feature some of the top stars in the history of baseball. Included are Ruth, Cobb, Gehrig, Wagner, Johnson, McGraw, Young and Joe DiMaggio. Cards contain an interesting write-up on the back

**Complete Set (15 Cards) . . . . . \$19.95**



## 8 X 10 HALL OF FAME INDUCTION DAY CARDS

These 8 X 10 Full Color Induction Day cards feature a picture of the Inductee on the left and the complete career statistics of the player on the right along with the date they were inducted into the Baseball Hall of Fame. These cards were sold exclusively in Cooperstown, NY on and after induction day. We have five players available.

08/02/92	Hal Newhouser (Tigers) . . . . .	9.95
08/02/92	Rollie Fingers (A's) . . . . .	13.95
08/01/93	Reggie Jackson (Angels) . . . . .	14.95
08/01/93	Reggie Jackson (Orioles) . . . . .	24.95
07/31/94	Leo Durocher (Dodgers B&W) . . . . .	11.95
07/31/94	Steve Carlton (Cardinals) . . . . .	12.95

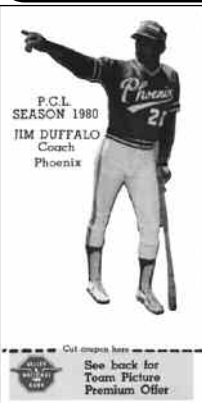
## LEGENDS OF BASEBALL STAMP SHEET



In this classic collection, the U.S. Postal Service honors 20 nominees for the Major League All-Century team. Each full sheet contains 20 official 33 cent U.S. postage stamps. Included are such greats as Ruth, Cobb, Robinson, Clemente, Wagner along with Lou Gehrig and 14 other Hall of Famers. A full sheet measures 7 1/8" X 7 1/3", great for framing. We were able to acquire only a limited number of sheets so order yours today!

**Uncut Stamp Sheet \$24.95**

# SPECIAL This Page All Items 30% Off Except Brewers Cards



## 1980 VALLEY NATIONAL BANK PHOENIX GIANTS (Zeenut Design)

This 26 card set features the 1980 Phoenix Giants of the Pacific Coast League (San Francisco Giants AAA). These cards were a give-away at the stadium and measure 2" x 4" and are similar in design of Zeenut Cards from the early 1900's. Each card features a picture of the player on front and a small write up and statistics on back. Included in this set are Fred Breining, Max Venable, Bob Kearney, Dennis Littlejohn, Joe Pettini, and coaches Rocky Bridges, Jim Duffalo and Ethan Blackaby GM. Supply is limited.

**Complete Set (26 Cards) \$10.95**



## NEGRO LEAGUE POSTCARD SET

This colorful 12-card set features the artwork of renowned sports artist Susan Rini. A limited edition set, with only 5,000 produced, includes Josh Gibson, Buck Leonard, Lou Dials, Monte Irvin and Cool Papa Bell with seven other great Negro League players. A beautiful colorful tribute to the old Negro League.

**Complete Set (12 Cards) \$18.50**



## 2000 USA WOMEN'S SOFTBALL PROGRAM

We recently obtained a limited supply of game programs from the 2000 USA Softball Women's National Team's June 2000 exhibition game played at Zenoff Park in Stevens Point, WI. The game was part of the USA team's "Central Park to Sydney 2000" Tour, prior to the 2000 Summer Olympics.

The full-color program features individual photos and biographies, team photos and Olympic softball history. A perfect addition for collectors of Olympics memorabilia.

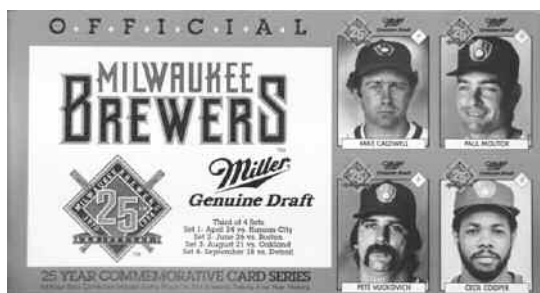
**\$12.95**



## 1992 TOPPS NATIONAL SPORTS COLLECTORS CONVENTION SHEET

Issued by Topps in 1992 for the National Card Show in 1992 this large 11" X 15" uncut sheet contains 12 baseball type cards with the convention logo in the middle of the sheet. This unique sheet contains cards of people who you normally would not find on cards. The sheet features Larry King, Joan Lunden, Wilma Rudolph, Lou Holtz, Ann Meyers, LeRoy Nieman, Bob Costas, Nick Charles, John Wooden, Bruce Jenner, Nancy Lopez and Chris McCarron. A very unique item.

**\$19.95**



## MILLER BREWING 25TH ANNIVERSARY MILWAUKEE BREWERS CARDS

To commemorate the 25th anniversary of the Milwaukee Brewers in 1994 Miller Brewing Co and the Milwaukee Brewers issued a set of cards of every player that played for the Milwaukee Brewers from 1970 thru 1994. The set was produced in four booklets of 94 cards each for a total of 376 cards. Individual 2 1/2" X 3 1/2" cards were perforated for easy detachment from the 7" X 13" booklets. Cards feature black and white player photos against a gold border. Backs are in black and white and include a few biographical bits, a line of career stats, the years played with the Brewers and team and brewery logos. Individual cards are unnumbered. Complete sets of all four books have sold out but we do have some individual books remaining.

**Complete Set (4 Books, 376 Cards) SOLD OUT**

**Book #2 (94 Cards) \$59.95**

**Book #3 (94 Cards) \$19.95**

**Book #4 (94 Cards) \$19.95**

**FOR INQUIRIES AND OTHER CALLS USE OUR REGULAR BUSINESS LINE (715) 344-8687**